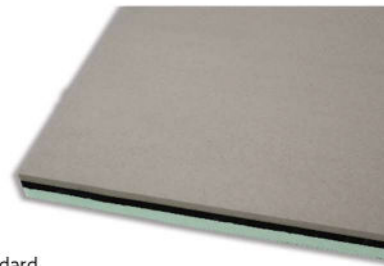


REWALL 40

ACOUSTIC INSULATION FOR WALLS

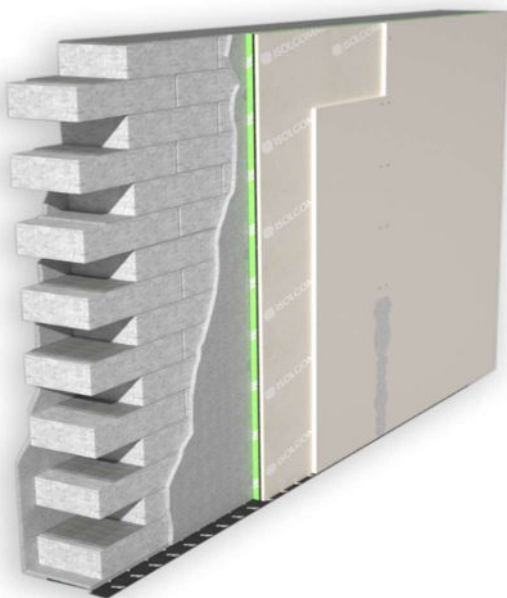


HIGH PERFORMANCE ACOUSTIC AND THERMAL INSULATION PANEL COMPOSED OF POLYESTER FIBRE, RUBBER GRANULES AND A PLASTERBOARD LAYER



■ TECHNICAL SPECIFICATION

Airborne noise insulation in 40 mm-thick pre-assembled panels, made of a 8 mm-thick SBR (Stirene Butadiene Rubber) rubber granules hot pressed with a polyurethane binder, density of 800 kg/m³, a 20 mm-thick polyester fiber panel, density of 100 kg/m³, and a 12.5 mm-thick plasterboard. The panels dimensions are 1.20 m width x 2.00 m length.



■ CERTIFIED ACOUSTIC IMPROVEMENT

CE product for acoustic insulation of existing walls and floors, Rewall 40 reduces airborne noise between different apartments by improving acoustic comfort

■ FLEXIBILITY

Rewall 40 can be applied to any wall or ceiling with acoustic and vibration-damping functions. High performances in little space. Resistant to moisture

■ LAYING COSTS REDUCTION

Supplied already coupled to a plasterboard layer, Rewall 40 ensures rapid and minimally invasive interventions in terms of dirt and dust production in environments

■ TO BE USED WITH

In renovations to improve the acoustic performance of existing walls or floors, thanks to its low thickness and comfortable dry laying. Elevator compartments

■ TECHNICAL DATA

| | |
|--------------------|------------------------|
| Thickness | 40 mm |
| Length | 2,00 m |
| Width | 1,20 m |
| Mass per unit area | 18,0 kg/m ² |

| | |
|----------------------|--------------------------|
| Reaction to fire | B-s1,d0 |
| Thermal resistance R | 0,761 m ² K/W |
| Transmission Loss Rw | 63 dB |

Wall composition - 300 mm thick
Coating made with Rewall 40 + 12.5 mm plasterboard on 215 mm brick wall with 15 mm plaster on both sides



REWALL 40

ACOUSTIC INSULATION FOR WALLS

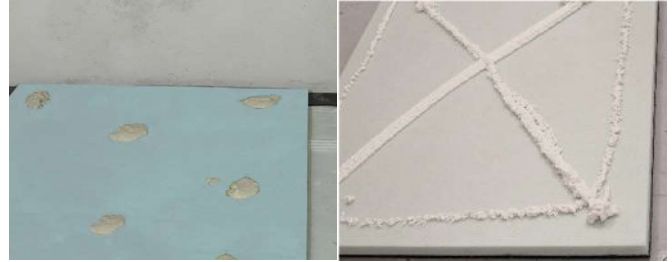


INSTALLATION INSTRUCTIONS FOR ACOUSTIC INSULATION FOR WALLS REWALL 40

1 Lay the under wall stripe



2 Lay points of a gypsum-based glue on the ground panel or use a low-expansion polyurethane glue



3 Glue the panel to the wall pressing lightly



4 Attach two safety plugs to the top of the panel



5 Fix the second gypsum board with the glue and/or appropriate screws



6 Apply the plastic mesh tape in the gypsum boards jointing lines. Grouting



ACOUSTIC CERTIFICATES
Product acoustic certificates are available and allow to comply with the limits imposed by law



INSTALLATION TEST
Acoustic performances of the intervention can be tested on site by a competent technician



ACOUSTIC REPORT
Our technical staff is able to give you the proper support in all the project phases, supporting you in the identification of materials



LAYING ASSISTANCE
Thanks to our extensive commercial technicians network, we are at your disposal for the coordination of the first laying phases on site

[SEE THE REFERENCES > VISIT THE WEBSITE](#)

[CONTACT THE TECHNICAL DEPARTMENT FOR MORE INFORMATION](#)



www.isolgomma.com
PRG-MOD. 15 - REV. 5.0 01/07/21 EN

© Isolgomma Srl. The data and images are indicative and can be changed at any time without notice

